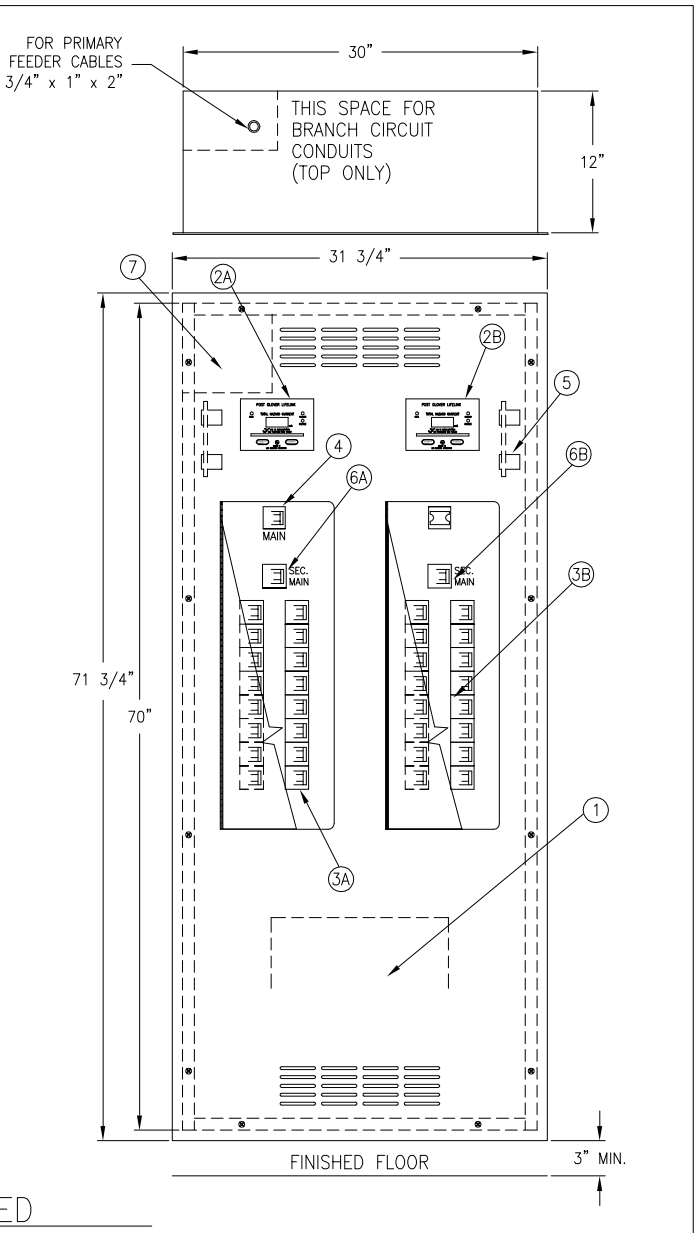
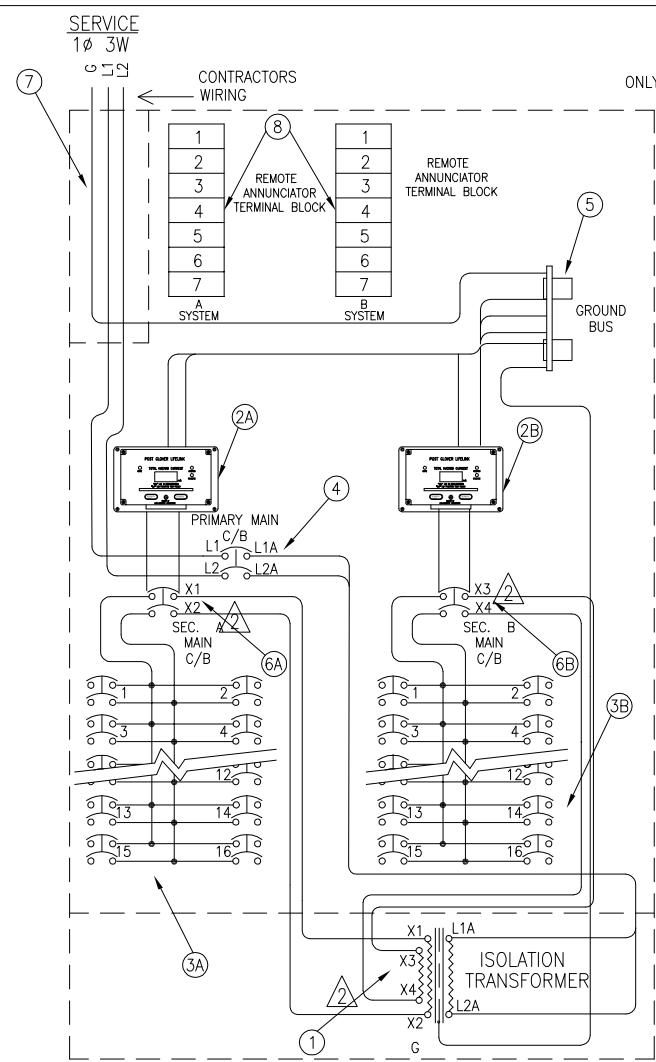


ITEM	A	DESCRIPTION	B	QTY.
1	___ V	PRIMARY TRANSFORMER ___ KVA ___ V PRIMARY DUAL SECONDARY	___ V	1
	KVA		KVA	
	3		3	
	5		5	
	7.5		7.5	
		PRIMARY KVA RATING IS SUM OF BOTH SECONDARY KVAs.	10	
			15	
2A		LINE ISOLATION MONITOR: MICROPROCESSOR, 120 VOLT, TOTAL HAZARD INDEX TO BE (5) mA, 15 MICROAMPS LEAKAGE CURRENT, NON-SWITCHING 2 CHANNEL CIRCUITRY, AND ALARM FOR LOSS OF GROUND CONNECTION TO L.I.M., U.L. APPROVED TYPE COMPLETE WITH DIGITAL HAZARD CURRENT METER, GREEN AND RED INDICATOR LIGHTS, SILENCE AND TEST SWITCHES, BUZZER AND FUSES.	120V	1
2B		LINE ISOLATION MONITOR: MICROPROCESSOR, 208 VOLT TOTAL HAZARD INDEX TO BE (5) mA, 15 MICROAMPS LEAKAGE CURRENT, NON-SWITCHING 2 CHANNEL CIRCUITRY, AND ALARM FOR LOSS OF GROUND CONNECTION TO L.I.M., U.L. APPROVED TYPE COMPLETE WITH DIGITAL HAZARD CURRENT METER, GREEN AND RED INDICATOR LIGHTS, SILENCE AND TEST SWITCHES, BUZZER AND FUSES.	120V	1
			208V	
			240V	
3A	___ KVA	120 V BRANCH CIRCUIT BREAKERS CONSISTING OF, MAX. 16:	20A	2-POLE
			30A	2-POLE
			50A	2-POLE
3B	___ KVA	___ V BRANCH CIRCUIT BREAKERS CONSISTING OF, MAX. 16:	20A	2-POLE
			30A	2-POLE
			50A	2-POLE
4		PRIMARY MAIN CIRCUIT BREAKER ___ VOLTS ___ AMPS	2 POLE	1
5		GROUND BUS-24 BRANCH CIRCUITS, SIZE #14 TO #6		2
6A		120V SECONDARY MAIN CIRCUIT BREAKER ___ AMPS	2 POLE	1
6B		208 SECONDARY MAIN CIRCUIT BREAKER ___ AMPS	2 POLE	1
7		PRIMARY WIRING COMPARTMENT		1
8		REMOTE ANNUNCIATOR TERMINAL BLOCKS		2



- GENERAL NOTES:**
- 1) BOX WILL BE CONSTRUCTED OF GALVANIZED STEEL, IN ACCORDANCE WITH U.L. STANDARD 50.
  - 2) BOLT-IN CHASSIS FASTENS TO STUDS IN BACK OF BOX.
  - 3) FRONT WILL BE FABRICATED OF 12GA., TYPE 304 STAINLESS STEEL AND FINISHED WITH A #4 SATIN POLISH.
  - 4) CONDUIT ENTRANCE AREA IS DESIGNED ON LAYOUT FOR GROUNDED POWER ONLY. BRANCH CIRCUITS AND SIGNAL CONDUITS MAY ENTER ANY OTHER AREA OF BOX.
  - 5) BRANCH CIRCUIT WIRING TO BE #12 XHHW.
  - 6) ANNUNCIATOR WIRES TO BE 18 THHN OR EQUAL.

ECN#04-237. THE 120V WINDING WAS X3 AND X4. UPDATED TO NEW TRANSFORMER STANDARD. UPDATED BORDER.	JJM 10/14/04 02
ECN#03-014. THE 120V WINDING WAS X1 AND X2. UPDATED TO TRANSFORMER MARKINGS.	JJM 10/15/03 01

FOR: **FOR REFERENCE ONLY**

STANDARD: XTLD03009.xls ACAD STANDARD: XTLD03009.dwg

**POST GLOVER LIFELINK**  
4750 OLYMPIC BLVD. BLDG. B  
ERLANGER, KY U.S.A. 41018 (859) 283-5900  
COPYRIGHT © 2004

THIS DOCUMENT AND THE INFORMATION IT CONTAINS ARE THE PROPERTY OF POST GLOVER LIFELINK. IT IS DISCLOSED FOR THE PURPOSE FOR WHICH IT IS FURNISHED AND SHALL NOT BE DUPLICATED OR DISTRIBUTED.

TITLE/DESCRIPTION: DUAL VOLTAGE ISOLATED POWER PANEL SINGLE PHASE, FLUSH MOUNTED, MARK IV TYPE: XTLD		S.O. NUM.:
DFTR: JJM	DATE: 06/23/03	DWG. NO.: XTLD03009
		REV.: 02